



INSTALLATION INSTRUCTIONS

S&B P/N 75-5042

VEHICLE APPLICATION

**2007-2008 Chevrolet /
Avalanche, Suburban 1500 , Tahoe
4.8L, 5.3L, 6.0L, 6.2L
2007-2008 GMC /
Yukon, Yukon XL, Yukon Denali
4.8L, 5.3L, 6.0L, 6.2L
2007-2008 Cadillac /
Escalade 6.2L**

- * Kit may not fit vehicles with the following Aftermarket Parts installed.
- * Body Lift
- * Custom Hood
- * Throttle Body Upgrades
- * Throttle Body Spacer

PARTS LIST

QTY	DESCRIPTION	QTY	DESCRIPTION
1	(M) Intake Tube	1	(C) Clear Lid
1	(G) Air Box	1	(N) # 72 Hose Clamp
1	(I) Air Box Adapter	4	(J) # 60 Hose Clamp
1	(D) Air Filter	2	(H) 5/16-18 SS Screw
1	(L) Hump Adapter	2	(P) # 4 Hose Clamp
1	(F) Straight Adapter	1	(E) # 80 Hose Clamp
1	(O) Throttle Body Adapter	4	(B) SS Concave Washer
1	(Q) 13" long 3/8" Hose	4	(A) SS 10/24 Phillips Screw

TOOLS REQUIRED

- 10 mm Wrench
- 10mm Socket
- 5/16" Nut driver or
- Flat Blade Screwdriver
- Phillips Screwdriver

Your S&B Air Filter P/N KF-1035 is factory oiled and ready to use. When serviced it will require 87g (main body) plus 17g (top) of S&B Filter Oil.

1. With the ignition switched off, place vehicle in Park and or set Parking Brake. Disconnect the negative battery cable.

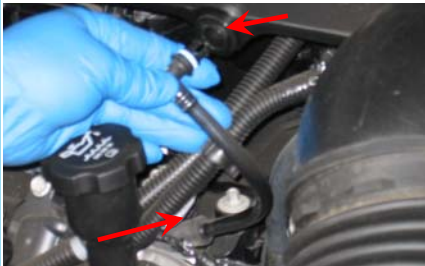
2. Pull up and out to remove the engine cover from the vehicle.



3. Disconnect the electrical connection to the MAF sensor at the OE air box.



4. Pull the crankcase vent line from the OE intake tube and then from the engine along with the rubber connector and remove it from the vehicle.



5. Carefully pry the hose router clamp from the OE air intake tube.



6. Loosen the hose clamp at the throttle body and at the MAF sensor and remove the OE intake tube from the engine.



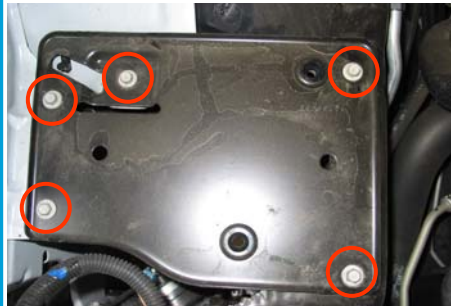
7. Pull the OE air box towards the engine and up to release it from the vehicle.



8. Loosen the hose clamp on the OE air box and remove the MAF sensor.
Note: Direction of arrow with regards to flow.



9. Remove the OE air box tray from the vehicle. Four of these bolts will be used to secure the S&B air box to the vehicle.



10. Attach the S&B Filter Adapter (I) to the S&B Air box (G), secure using the 5/16 SS Screws (H) provided.



11. Place the S&B Air Box assembly into the vehicle, align the 4 holes with the OE mounting locations and secure using the OE bolts.



12. Slide the S&B Straight Adapter (F) over the MAF sensor's honey comb end, secure using a # 60 Hose Clamp (J).



13. Connect the MAF sensor assembly to the S&B Filter Adapter (I) and secure using a # 60 Hose Clamp (J).





INSTALLATION INSTRUCTIONS (continued)

14. Slide the S&B Hump Adapter (L) over the MAF sensor's flange and secure using a # 60 Hose Clamp (J).



19. Remove the protective covering from the S&B Clear Lid (C).



15. Slide the S&B Throttle Body Adapter (O) over the S&B Tube (M) along with the # 72 Hose Clamp (N), do not tighten at this step.



20. Place the Clear Lid (C) on the Air Box (G) and secure using the 8/32 SS Screws (A) and SS Washers (B).



16. Place another # 60 hose clamp (J) on the Hump Adapter (L) then insert the small end of the S&B Tube (M) into the S&B Hump Adapter. Then position the other end of the tube over the throttle body and firmly secure the # 72 Hose Clamp (N), then secure the # 60 Hose Clamp (J) at the Hump Adapter.



21. Reconnect the MAF sensor electrical connection.



17. Install the Crankcase Vent Hose (Q) onto the S&B Intake Tube (M) vent port and then onto the engine port where the OE line was removed in step #4 . Secure with two # 4 Hose Clamps (P).



22. Install the engine cover.



18. Place the S&B Air Filter (D) into the S&B Air Box (G), rotate the filter about a 1/4 turn for clearance and slide onto the flange and secure the # 80 Hose Clamp (E).



23. Reconnect the negative battery cable.



24. Inspect your installation, make sure kit is properly positioned and all fasteners are tight.

25. Affix the C.A.R.B. exemption sticker in plain sight under the hood.

PERFORMANCE TESTING

- * Engage parking brake and start your engine. Listen for abnormal noises. If an air leak is detected, re-inspect hoses and connections as they may need to be repositioned and tightened.
- * S&B FILTERS recommends that you keep your OE intake system in the event it is required in the future.
- * In order to maintain your warranty, all connections and components must be checked periodically for alignment and for proper tension on all connections. Failure to do so may void your warranty.
- * Use only S&B FILTERS cleaning and oil products to service your filter. Using any other brand oil and or cleaners on your S&B air filter may void your warranty.

Smog Certification Note:

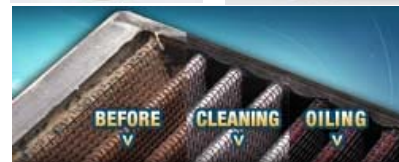
The California Air Resource Board (CARB) requires that an E.O. identification label be applied to the vehicle in order to pass a smog check inspection when a High Performance Intake Kit has been installed.

You must place the E.O. label provided on or near the intake kit after installation so that a smog check technician can easily verify the E.O. number.

FILTER CLEANING & OILING

PRECISION

CLEANING & OILING KIT



Order online today at www.sbfilters.com or through your local S&B distributor

