

TYPHOON INTAKE SYSTEMS®

BY 

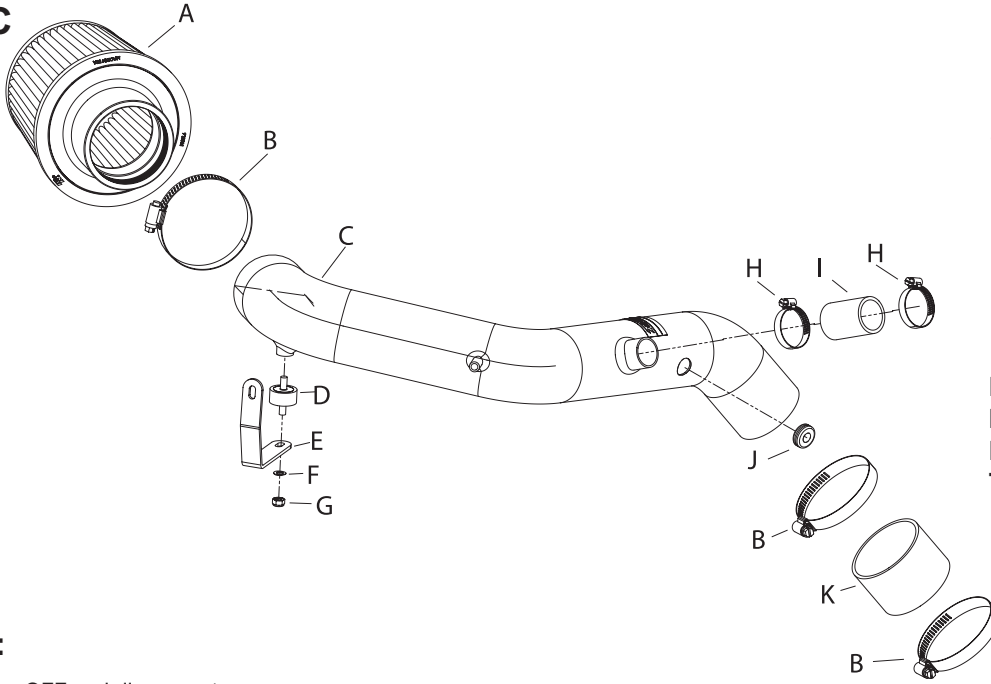
INSTALLATION INSTRUCTIONS

69-1015

Honda

2003-06 Element

L4-2.4L VTEC



TOOLS NEEDED:

Tools
Phillips Screw Driver
Flat Blade Screw Driver
Ratchet
8" Extension
10mm socket

Parts List

Description	Qty.	P/N
A FILTERCHARGER	1	RU-4960
B HOSE CLAMP #44	3	08560
C TYPHOON INTAKE TUBE	1	27153
D STUD; RUBBER MOUNT M6-1.00	1	07027
E BRACKET; "L" 69-1015 STL, FB/PC	1	010037
F WASHER; 6MM WAVE, SS	1	08277
G NUT; M6-1.00, NYLOCK, SS	1	07512
H HOSE CLAMP; #16 MINI	2	08427
I HOSE; 1-1/8"ID X 2"L, BLK SILC	1	084074
J GROMMET; 3/8"ID X 7/8"OD	1	08283
K HOSE; 2-3/4"ID X 2"L, STRAIGHT, BLACK	1	08440

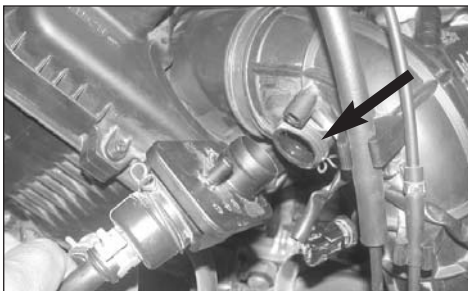
NOTE: FAILURE TO FOLLOW INSTALLATION INSTRUCTIONS AND NOT USING THE PROVIDED HARDWARE MAY DAMAGE THE INTAKE TUBE, THROTTLE BODY AND ENGINE.

TO START:

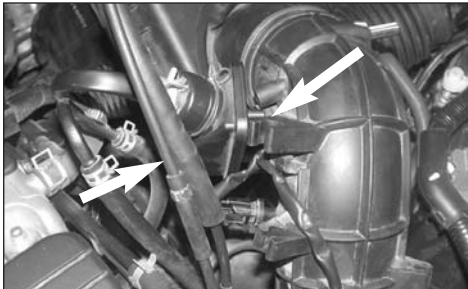
1. Turn the ignition OFF and disconnect the vehicle's negative battery cable.



2. Disconnect the vent hose from the stock intake tube as shown.



3. Disconnect the crank case vent hose from the stock intake tube as shown.



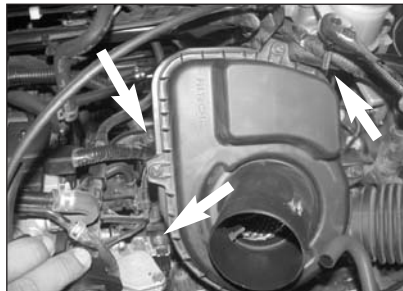
4. Unclip the cruise control cable and the throttle cable from the stock intake tube as shown.



5. Remove the air temperature sensor from the stock intake tube as shown.



6. Loosen the hose clamps at the throttle body and at the air cleaner, then, remove the stock intake tube as shown.



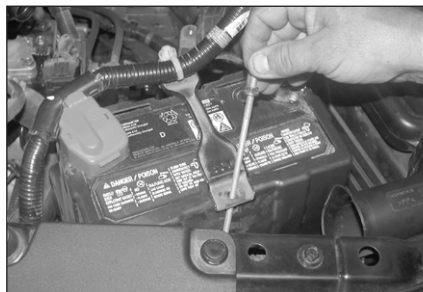
7. Loosen the three bolts that secure the air cleaner assembly to the engine as shown.



8. Disconnect the air inlet tube from the air cleaner assembly as shown.



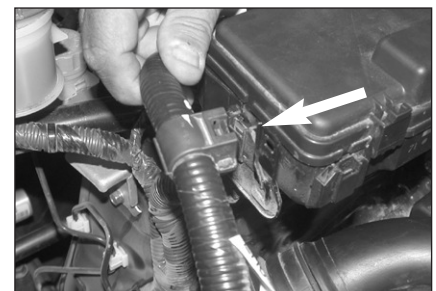
9. Remove the air cleaner assembly as shown.



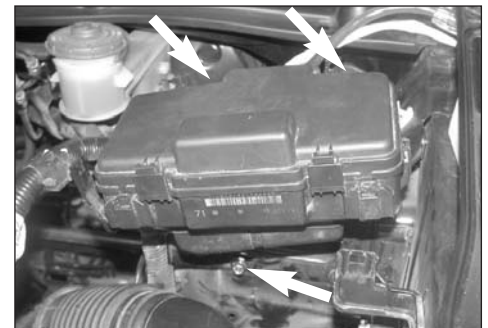
10. Loosen the battery hold down bracket and shift the battery to the left to gain clearance for the removal of the resonator.



11. Loosen and remove the battery ground at the inner fender as shown.



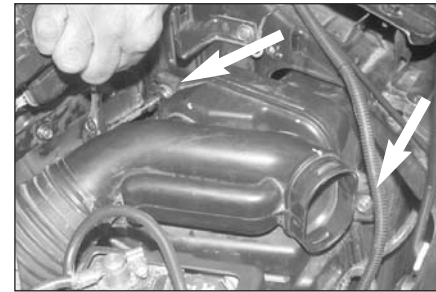
12. Unclip the wire harness from the side of the fuse box as shown.



13. Unclip the fuse box (3 places) and lift the fuse box upwards as shown.



14. Remove the resonator inlet as shown.



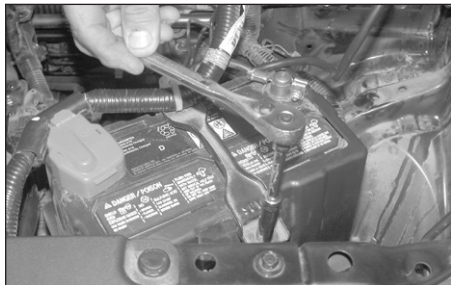
15. Remove the two bolts that secure the resonator to the inner fender as shown.



16. Remove the resonator as shown.



17. Install the fuse box back onto the stock bracket as shown.



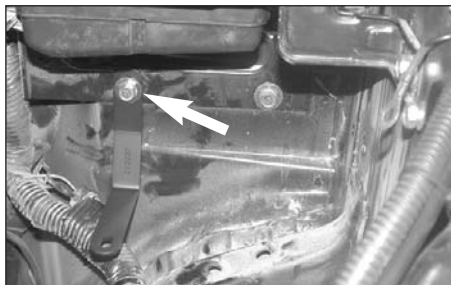
18. Move the battery back into position and secure it with the battery hold down bracket as shown.



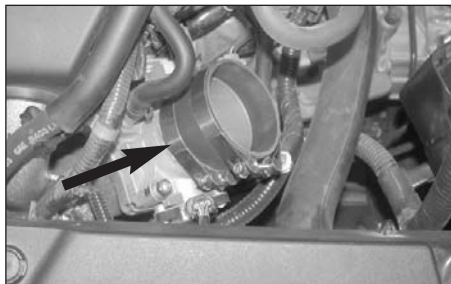
19. Clip the wire harness onto the stock fuse box bracket as shown.



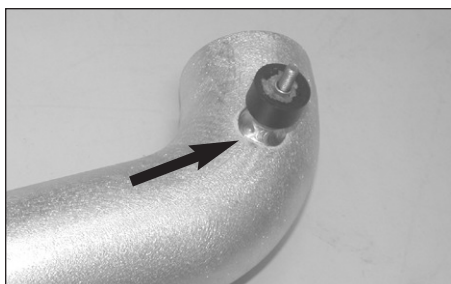
20. Remove the bolt on the lower fuse box bracket as shown.



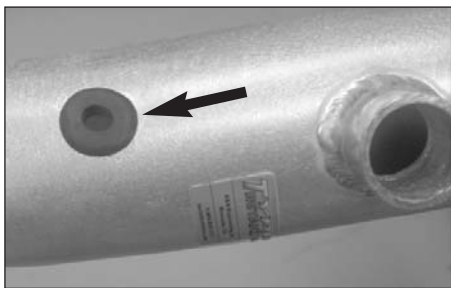
21. Install the provided bracket onto the threaded hole from step 20 and secure with the stock bolt as shown.



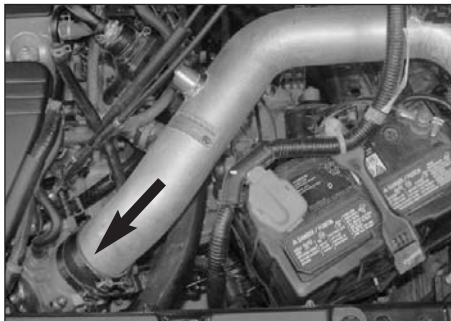
22. Install the silicone hose and hose clamps onto the throttle body and tighten the hose clamp on the throttle body.



23. Install the rubber mounted stud into the threaded boss on the K&N Typhoon intake tube as shown. **NOTE: Before installing the rubber mounted stud, inspect the inside of the tube for any debris, then clean the inside out with water and a towel. Inspect the tube one more time before proceeding to the next step.**



24. Install the provided grommet into the hole on the K&N Typhoon intake tube as shown.



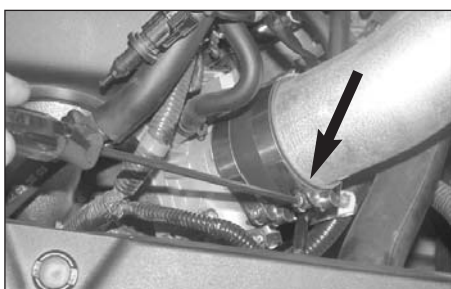
25. Slide the tube into the silicone hose as shown, but do not tighten at this time.



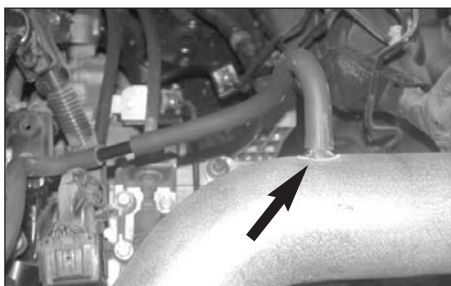
26. Line up the rubber mounted stud with the bracket from step 21 as shown.



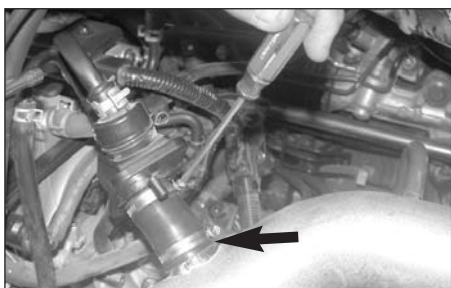
27. Using the provided hardware secure the rubber mounted stud to the bracket as shown.



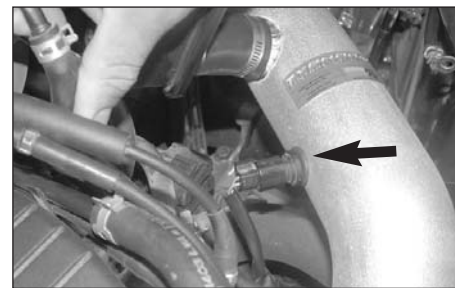
28. Tighten the hose clamp at the throttle body as shown.



29. Reconnect the vent hose to the vent on the K&N Typhoon intake tube as shown.



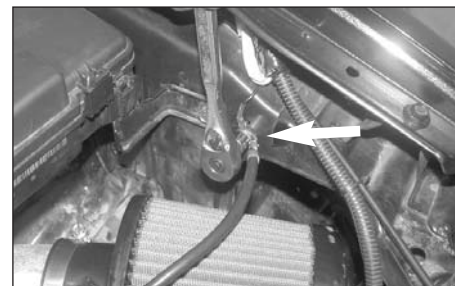
30. Install the provided silicone hose and hose clamps onto the crank case vent, then, connect the other end to the vent on the K&N Typhoon intake tube as shown.



31. Install the air temperature sensor into the grommet on the K&N Typhoon intake tube as shown.



32. Install the K&N Filtercharger onto the K&N Typhoon intake tube and secure with the provided hose clamp as shown.



33. Reconnect the ground cable to the inner fender as shown.



34. Reconnect the negative battery cable and double check that everything is tight and properly positioned before starting the vehicle.

35. The C.A.R.B. exemption sticker, (attached), must be visible under the hood, so that an emissions inspector can see it when the vehicle is required to be tested for emissions. California requires testing every two years, other states may vary.

36. It will be necessary for all Typhoons to be checked periodically for realignment, clearance and tightening of all connections. Failure to follow the above instructions or proper maintenance may void warranty.

ROAD TESTING:

1. Start the engine with the transmission in neutral or park, and the parking brake engaged. Listen for air leaks or odd noises. For air leaks secure hoses and connections. For odd noises, find cause and repair before proceeding. This kit will function identically to the factory system except for being louder and much more responsive.

2. Test drive the vehicle. Listen for odd noises or rattles and fix as necessary.

3. If road test is fine, you can now enjoy the added power and performance from your kit.

4. K&N suggests checking the Filtercharger element periodically for excessive dirt build-up. When the element becomes covered in dirt (or once a year), service it according to the instructions on the Recharger service kit, part number 99-5000 or 99-5050.

FREE K&N DECAL To register your warranty, please see us online at knfilters.com/register. FREE K&N DECAL