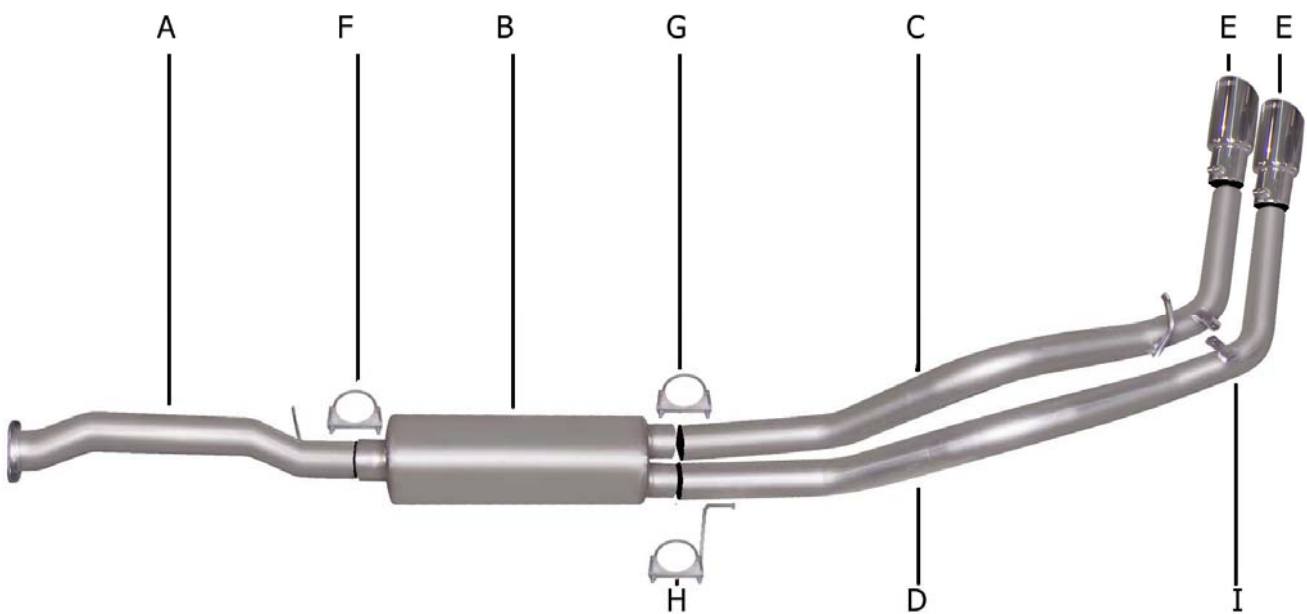




**INSTRUCTION MANUAL**  
**CAT-BACK DUAL STAINLESS SPORT EXHAUST**  
**94-95 CHEVY 1500 TRUCK 5.7L 2/4WD**  
**EXTENDED CAB, SHORT BED**  
**PART #65903**



ITEM	PART #	QUANTITY	DESCRIPTION
A	182-30046FS	1	3" STAINLESS HEADPIPE W/FLANGE #GP-105
B	789800S	1	SUPERFLOW STAINLESS MUFFLER
C	372-700238S	1	2.5" PSGR. SIDE STAINLESS OVERAXLE PIPE
D	373-700239S	1	2.5" DRIVERSIDE STAINLESS OVERAXLE PIPE
E	500396	2	3-½" STAINLESS TIPS
F	OHD300	1	3" CLAMP
G	5757	1	2-½" CLAMP
H	4149	1	REAR MUFFLER HANGER
I	BO-906	1	BOLT KIT FOR TAILPIPE

Thank you for purchasing our GIBSON PERFORMANCE EXHAUST SYSTEM for your vehicle. If you need further assistance please do not hesitate to call our Technical Department at (800) 528-3044, Monday through Friday, 8:00 am to 5:00pm.0306

# EXHAUST INSTALLATION #65903

WHEN INSTALLING THIS EXHAUST SYSTEM, MAKE SURE TO USE PROPER SAFTEY PRECAUTIONS. USE JACK STAND WHEN UNDER TRUCK, SET PARKING BRAKE, BLOCK TIRES, AND USE SAFTEY GLASSES AND GLOVES. DO NOT WORK WITH HOT PIPES!

## SUGGESTED TOOLS:

15mm SOCKET & WRENCH, 9/16" SOCKET & WRENCH, 1/2" SOCKET WRENCH, JACK STAND, WD-40, HACKSAW

LAY OUT THE GIBSON EXHAUST ON THE FLOOR AND COMPARE PART NUMBERS WITH THE MANUAL.

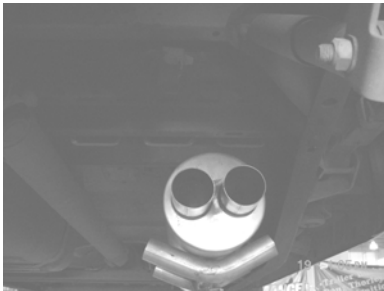
1.) TO REMOVE EXHAUST UNBOLT IT FROM THE 2-BOLT FLANGE LOCATED BEHIND THE CATALITIC CONVERTER. SAVE STOCK NUTS & BOLTS. NOW CUT OFF YOUR STOCK TAILPIPE JUST BEHIND THE MUFFLER AND REMOVE. LEAVE ALL RUBBER GROMMETS ON THE HANGERS. USE WD-40 ON A.T.T.



2.) BOLT HEADPIPE #A ONTO THE FACTORY FLANGE RE-USING THE FACTORY NUTS & BOLTS. INSERT WELDED HANGER INTO RUBBER GROMMETS. DO NOT TIGHTEN.



3.) SLIP MUFFLER ONTO THE HEADPIPE 1 1/2" TO 2 1/2" WITH INLET TOWARDS THE CONVERTER. USE A JACK STAND TO SUPPORT THE MUFFLER. USE CLAMP #F TO SECURE MUFFLER TO HEADPIPE. DO NOT TIGHTEN.



4.) INSTALL HANGER #H ONTO DRIVERSIDE MUFFLER OUTLET. SLIDE HANGER INTO RUBBER GROMMETS. DO NOT TIGHTEN.



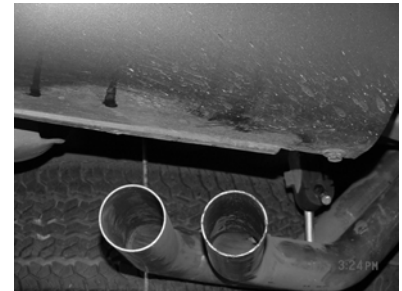
5.) INSTALL PASSENGER SIDE OVERAXLE TAILPIPE #C INTO MUFFLER 1 1/2" TO 2 1/2". SLIDE WELDED HANGER INTO RUBBER GROMMETS USING CLAMP #G TO SECURE PIPE TO MUFFLER. DO NOT TIGHTEN.



6.) INSTALL DRIVERSIDE OVERAXLE TAILPIPE #D INTO MUFFLER 1 1/2" TO 2 1/2". NOW BOLT BOTH PIPES TO THE TOGHTHER USING BOLT KIT #I. DRIVERSIDE TAB MOUNT GOES ON THE BOTTOM. SPARE TIRE MAY NEED TO BE LOOSENED UP AND PUSHED OVER TO THE DRIVERSIDE.



7.) INSTALL YOUR STAINLESS TIPS. TO CLEAN THE TIP USE A SCOTT BRITE OR ALUMINUM AND STAINLESS STEEL CLEANER. NOW TIGHTEN ALL BOLTS, CLAMPS, HANGERS, AND FLANGE.



MAKE SURE YOU HAVE A 1" CLEARANCE ON ALL PIPES FROM ALL FUEL, BRAKE LINES, SHOCK BOOTS, TIRES, ETC.